



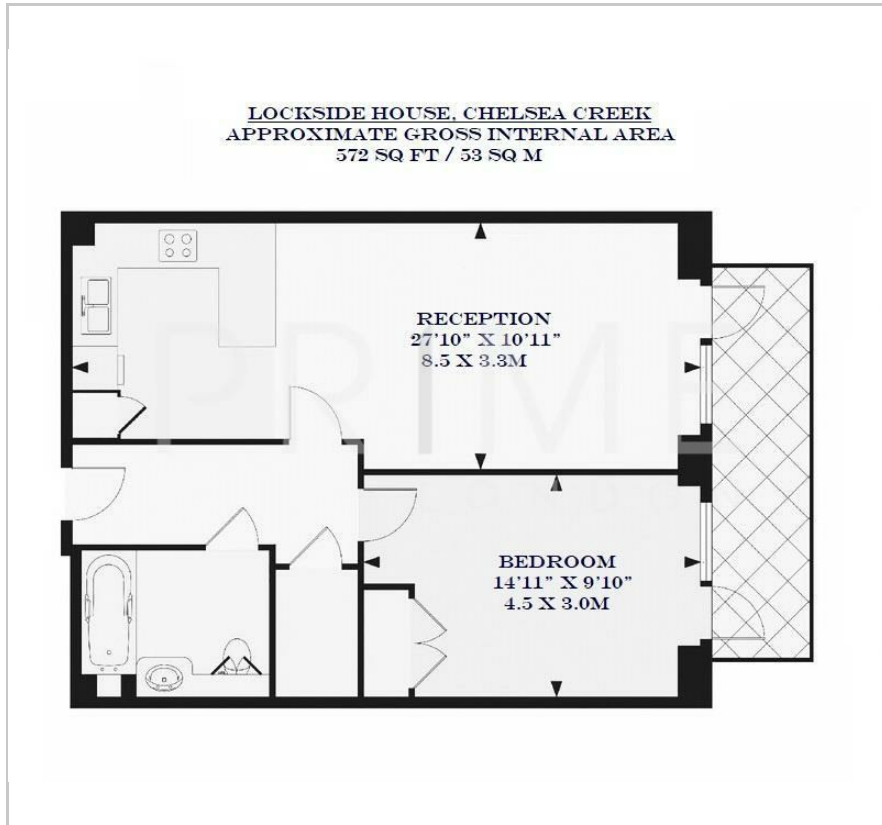
## Lockside House

3 Thurstan Street, Chelsea Creek, SW6 2XD

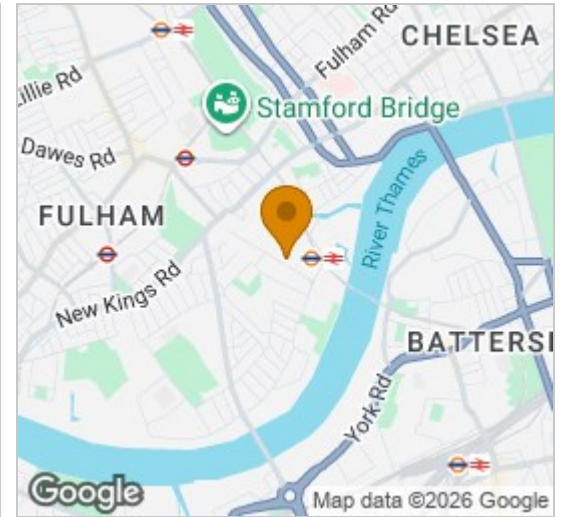
£750 Per Week



## Floor Plan



## Area Map



## Energy Efficiency Graph



## Viewing

By appointment. Contact us on 0207 052 1075 if you wish to arrange a viewing appointment for this property, or require further information.

- One bedroom apartment
- Private balcony
- Secure parking space
- 572 sq ft (53 sqm)
- Residents' gym, spa and communal gardens
- 24 hour concierge available

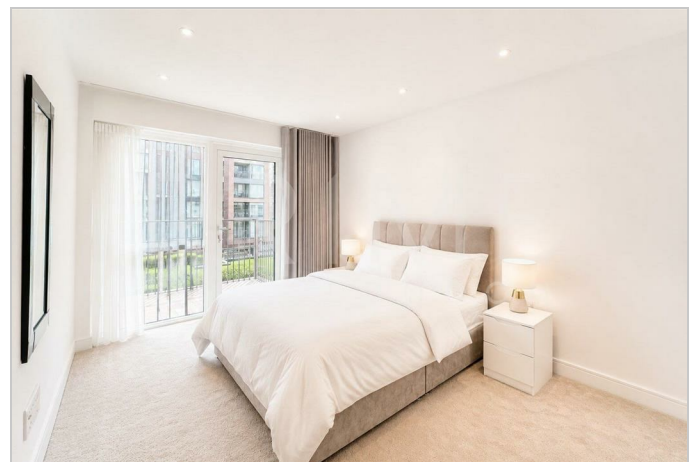
This bright one bedroom apartment, located in the popular Lockside House in Chelsea Creek, is available to lease through Prime London.

Totalling 572 sq ft (53 sqm) and facing the beautiful internal gardens, this well apportioned apartment offers a spacious open plan reception with fully-fitted kitchen area, large double bedroom with built in wardrobes, and a luxurious bathroom.

Additional benefits include comfort cooling, underfloor heating, and a private balcony that can be accessed via the bedroom and the reception room.

Residents of this exceptional development have exclusive use of the spa, fitness center, indoor swimming pool, sauna, steam room, gymnasium and treatment room.

Residents will also benefit from a 24 hour concierge and an unrivalled selection of shops, bars, and restaurants.



These particulars, whilst believed to be accurate are set out as a general outline only for guidance and do not constitute any part of an offer or contract. Intending purchasers should not rely on them as statements of representation of fact, but must satisfy themselves by inspection or otherwise as to their accuracy. No person in this firm's employment has the authority to make or give any representation or warranty in respect of the property.